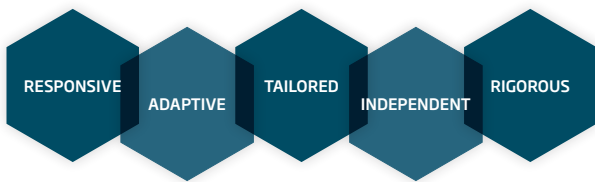


Monitoring, evaluation and learning (MEL)

Analysing evidence, learning from findings, and optimising outcomes

Evaluations provide an essential evidence base for informed understanding of progress. When evaluations are well-designed and focus on the intended users, they tell us what works and what does not. Equally, they measure progress according to plans and/or highlight results that were not initially planned but are equally important. And finally, they reveal if programmes were well designed, suggest what can be done to improve future implementation, redirect financial flows, or how to discontinue a flawed intervention.



KEY STRENGTHS

- + Strong track record of delivering both complex and more modest evaluations to a high standard and on deadline, meeting requirements for credibility, independence, and usefulness.
- + Application of innovative technology-based data collection, analysis and communication approaches that use a wide range of bespoke tools tailored to programme context - including tools for satellite and remote sensing; natural language processing; machine learning; web-crawling; and integrated data visualisation.
- + Established relationships with a global network of evaluators and technical specialists, allowing us to tailor teams to suit the needs of each MEL assignment.
- + Keen understanding of how to transmit and use knowledge to strengthen organisations through evaluations.
- + Expertise and systems for project management of multi-country teams, significantly improving value for money and efficiency.
- + Large global office network ensures timely and qualified administrative support and ability to address country-specific issues.

Extensive track record with a range of clients

To date, NIRAS has undertaken over 400 monitoring, evaluation and learning (MEL) related assignments worldwide. These have occurred at multiple levels - global policy, programmatic, and field projects - making sense of complex ongoing processes to ensure that **evaluative evidence** can support learning to improve performance, impact and more efficient use of aid resources. NIRAS has carried out evaluations for the EU, FCDO, Defra, AFD, Sida, BEIS, and other government departments, as well as bilateral and multilateral donor agencies internationally, NGOs, philanthropic foundations and other private sector clients worldwide.

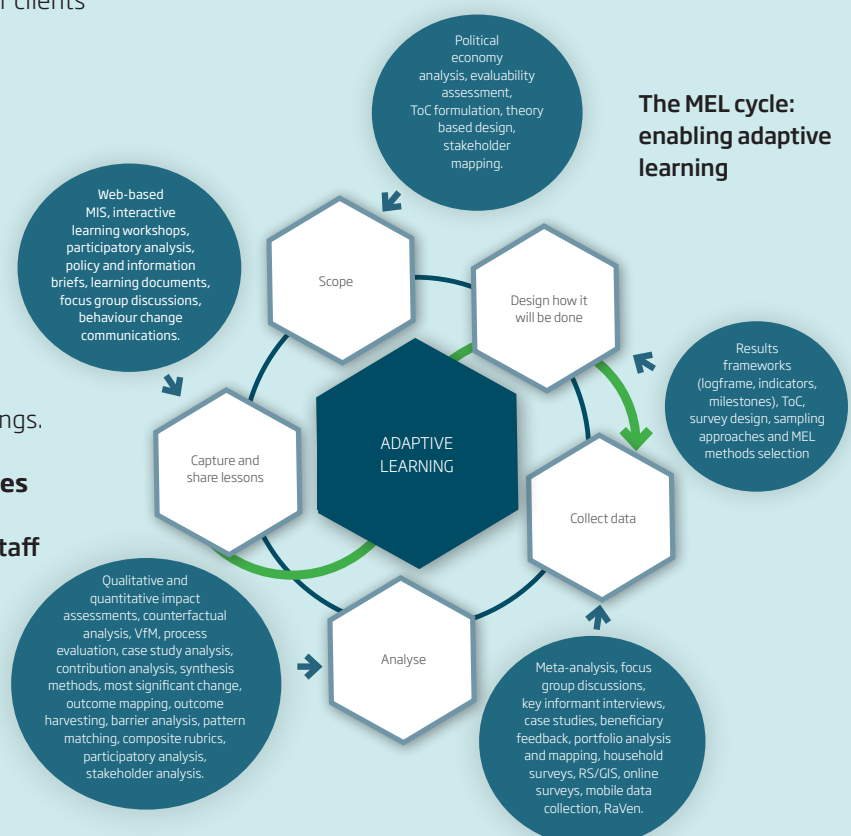
An approach tailored to individual requirements, guided by best practice

We pair our contextual and thematic expertise with a deep understanding of evaluation theories and approaches. Our evaluation services **add value** to end users and are **practical, contextually tailored and methodologically rigorous**. Our approach to MEL puts the user's needs at the heart of our approach, ensuring that evidence is relevant to inform decision-making and shared in a way that promotes learning to build greater ownership and usability of findings.

Strength based on a range of experience, purposes and contexts

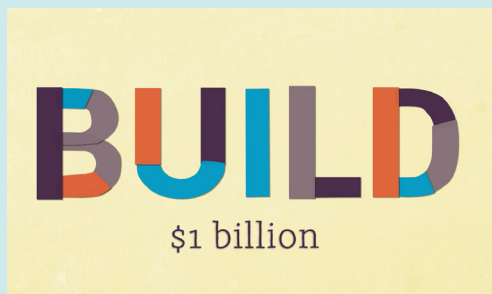
NIRAS' MEL strengths lies with its **technical in-house staff** and **extensive expert network**. We have over 30 highly experienced in-house MEL specialists with a wide geographic coverage across Africa, Europe, Asia, and South America. These individuals have deep practical experience in designing and implementing quantitative and qualitative evaluations that rely on a

mix of methods to support generation of **evidence-based findings**. We have experience delivering site-specific and complex multi-partner programme and portfolio level evaluation and learning assignments across a wide range of sectors. These include climate change and sustainable land use, governance and democracy, civil society, gender and human rights, peace and security and economic growth (trade and private sector development). Consequently, we have a sound understanding of key drivers for successes, best practice and lessons learned.



Measuring attribution and transformation in the context of UK climate finance

Together with its partner Climate Policy Institute, NIRAS-LTS designed and implemented a theory-based M&E programme to assess the long-term impacts of investments under the 11 year DFID/DECC-funded M&E programme for the Climate Private Public Partnership (CP3) (2015-2026), as we have been successful in both Phase I and II of the contract. CP3 funded two commercially run private equity funds to promote greater financial leverage and drive low carbon climate resilient growth in developing countries. Portfolio level analysis paired with case studies generates evidence for the contribution and additionality of the UK investment. The assignment piloted an innovative way to measure attribution and transformation in the context of UK climate finance. Results from this study inform the design of future climate investment projects. The evaluation delivers a range of products including investment-level deep dives, case studies, thematic portfolio-level evaluative synthesis reports, and a suite of communications and learning materials.



A participatory, iterative and adaptive developmental evaluation of the Ford Foundation's BUILD model

The Building Institutions and Networks (BUILD) initiative is a five-year, US\$1 billion investment in the long-term capacity and sustainability of 300+ social justice and civil society organisations around the world. The support aims to strengthen these institutions, making them more effective at

achieving their core missions, and reducing inequality in all its forms. NIRAS is conducting a developmental evaluation of the BUILD model. Designed to be participatory, iterative and adaptive, developmental evaluations are flexible, enabling programmes to track and understand outcomes as they emerge. The evaluation assesses the impact of the programme's approach and facilitates learning about the mechanisms and conditions for success and improved implementation. It covers BUILD in the US, in Europe and in the Global South.

The NIRAS team is collecting quantitative and qualitative data, providing real-time feedback for learning and programme adjustments, informing the next phase of BUILD, and tracking both emerging issues as well as longitudinal impacts. In the words of the Foundation: "Ultimately, our hope is that the evaluation will contribute to more nuanced evidence and compelling stories about BUILD as a grant-making approach, which will help shift the field of philanthropy toward providing more flexible, grantee-centered support."



+400

MEL assignments completed in the last five years

Realising your sustainable potential



Sample references	Place	Client	Years	Value (€)
Evaluation of the Building Institutions and Networks (BUILD) Initiative	Global	Ford Foundation (US)	2018-2021	3 021 600
Evaluation of Swedish Leadership for Sustainable Development	Sweden	Sida (Sweden)	2018-2019	103 800
Evaluation of the Reform Cooperation with Eastern Europe, Western Balkans and Turkey 2014-2019	Eastern Europe, Western Balkans and Turkey	Sida (Sweden)	2019-2020	146 719
Evaluation of IDRC's Think Tank Initiative II	Global	IDRC (Canada)	2015-2019	731 542
Framework Contract for Technical Advisory Services in Results-Based Management and Adaptive Management	Global	Sida (Sweden)	2019-2022	734 188
Sécurité et Développement au Nord du Mali (SDNM): Evaluation externe de la phase 2 et étude de faisabilité de la phase 3	Mali	AFD (France)	2020-2021	78 950
Evaluation of the United Nations University (UNU) Programmes in Iceland	Iceland	MFA (Iceland)	2016-2017	331 120
Evaluation Management Service Framework Contract Phase II	Finland	MFA (Finland)	2020-2023	1500 000
Evaluation of the Prosperity Fund and Programmes, Foreign Commonwealth Office	Global	FCDO (UK)	2017-2021	7 786 500
Global Evaluation of the Conflict, Stability and Security Fund, Foreign Commonwealth office	Global	FCDO (UK)	2019-2023	5 561 800
Knowledge, Policy and Implementation Support Manager for the Building Resilience and adapting to climate change in Malawi	Malawi	FCDO (UK)	2020-2023	6 444 700
Climate Public Private Partnership Monitoring and Evaluation Phase II	Global	FCDO (UK)	2020-2026	1 863 000
Evaluation Manager for Partnerships for Forests (P4F)	Global	FCDO (UK)	2017-2021	1 527 420
Impact Evaluation of the Climate Smart Agriculture Zambia (CSAZ) Programme	Zambia	FCDO (UK)	2017-2022	779 500
Monitoring and Evaluation Support for a National Project for Kenya: 'Enhancing access to weather and climate information for Kenya's coastal region'	Kenya	UK Met Office	2018-2019	111 131



For more information contact:

Raphaëlle Bisiaux
NIRAS International Consulting
Tel: +46 73 421 4057
Email: rabi@niras.com



Rebecca Adler
NIRAS-LTS International
Tel: +44 131 440 5500
Email: reba@niras.com

Join our team of development practitioners in our goal to alleviate global poverty. Register your CV on our database: <https://cv.niras.com>

www.niras.com/development-consulting